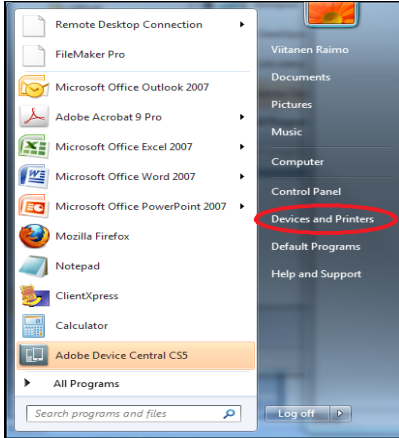


Tulostimen lisäys työasemaan

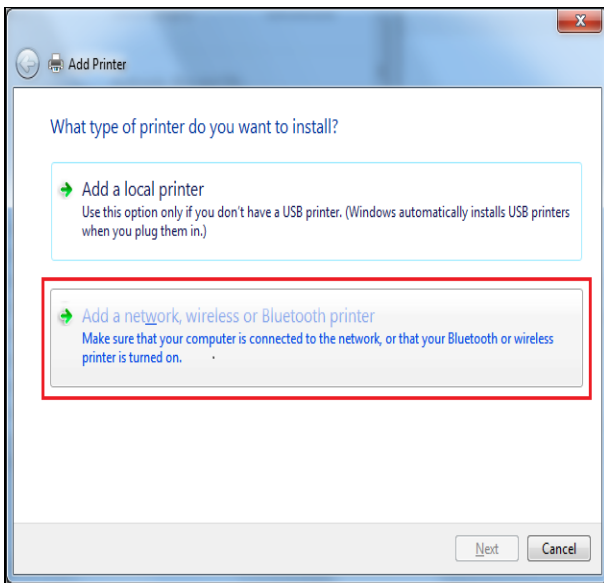
Tulostimen lisäys työasemaan

Mene Start valikon kautta Devices and Printers valikkoon

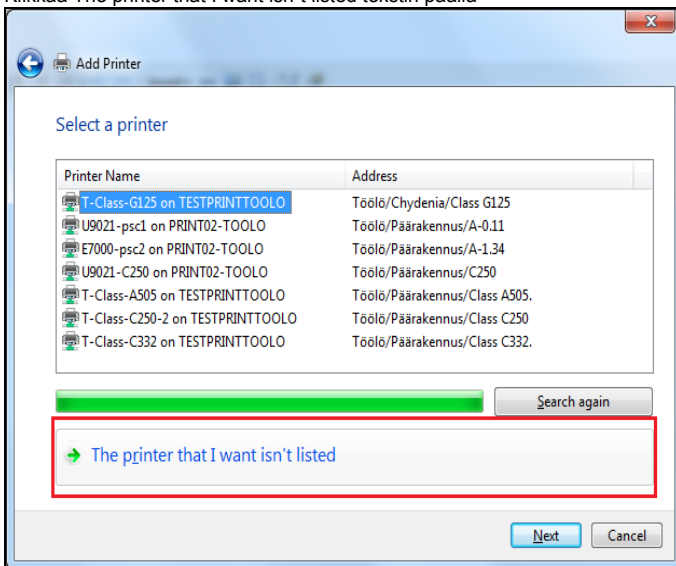


Klikkaa Add a printer

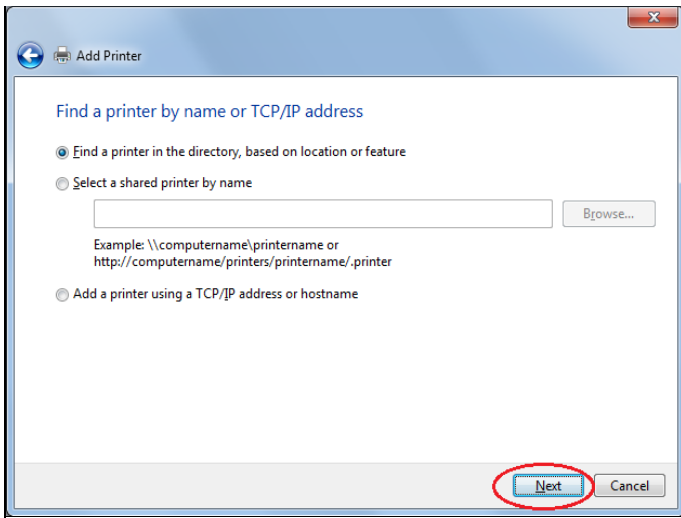
Klikkaa Add a network printer



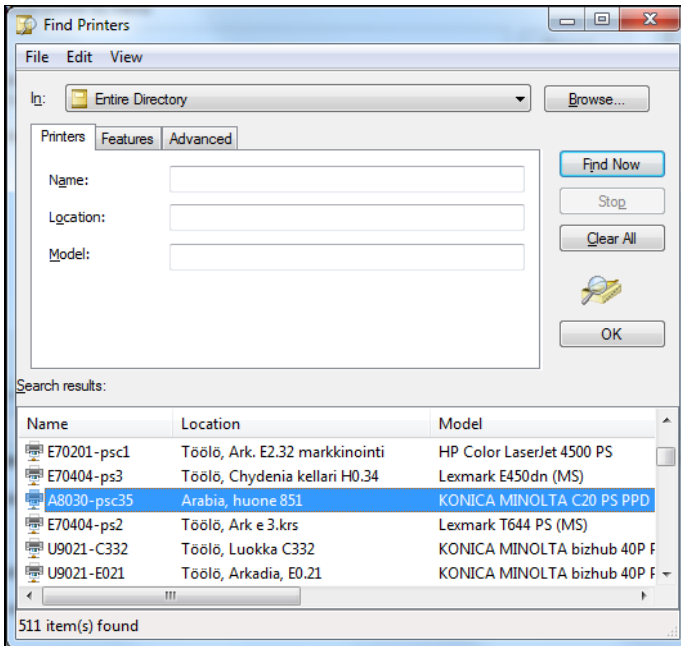
Klikkaa The printer that I want isn't listed tekstin päällä



Klikkaa next



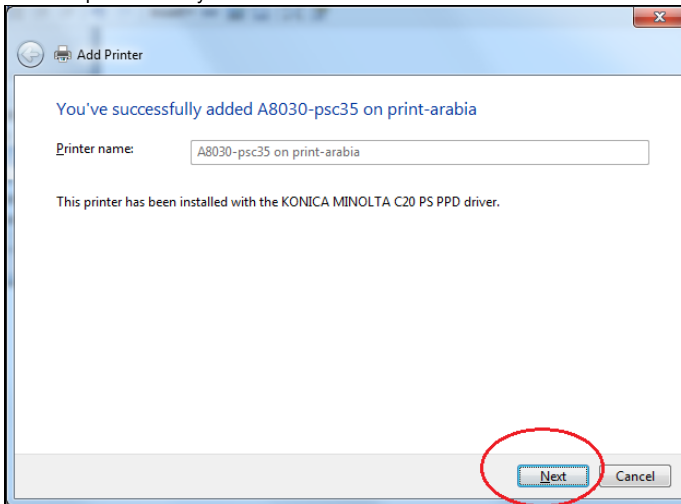
Valitse tulostin listasta tai klikkaa ja OK



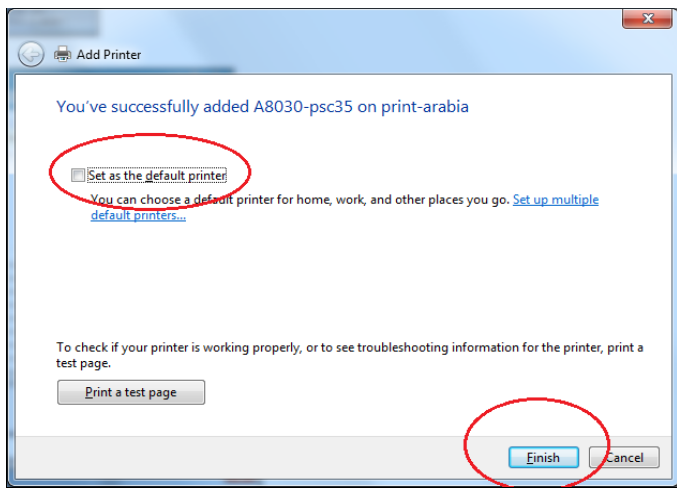
AALTO DESIGN FACTORY PRINTERS ARE:

- T21000-PS-ADF-06 - BALCONY**
- T21000-PS1 - BASEMENT**
- T21000-PS2 - COMPANY PLAZA**
- T21000-PS3 - RESEARCH PLAZA**
- T21000-PSC4 - COPY ROOM**
- T21000-PS4 - STAFF WING**
- T21000-PS - THE BARN**

Varmista printerin lisäys klikkaamalla next



Jos haluat oletusprinteriksi, niin laita ruksi Set as the default printer ja klikkaa Finish.



[Keskustele artikkelista](#)